

Mathematics***Telling the Time*****Maths**

Practise your skills using Mathletics. Spend around 15 minutes each night on Mathletics to brush up your basic facts knowledge.

Check out your group activities.

Work on your **NEXT LEARNING STEPS** on your wiki page.

Reading Log

Keep up your daily reading log - write down how many pages you read each evening.



Date	Title
9th	
10th	
11th	
12th	

From the teachers:

What a great start to Term 2.

Remember that you can check your e-asTTLe reports by going to:

<https://e-asttle.education.govt.nz/StudentWeb/login.faces>

Spelling results

I knew how to spell _____ out of 10 in this week's spelling test

24 Hour Clock

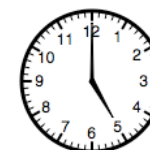
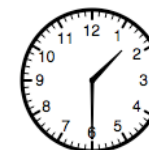
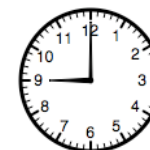
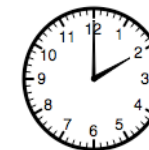
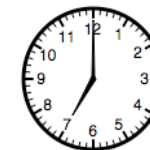
Digital clock and watches often show the time using the 24 hour clock 07:00 13:00

Find 5 things in the home that have digital clocks.

- 1.
- 2.
- 3.
- 4.
- 5.

Change these 12 hour times to 24 hour digital times.

- 1.) 7.30 a.m. _____:
- 2.) 10.30 p.m. _____:
- 3.) 2 p.m. _____:
- 4.) 3 a.m. _____:
- 5.) 9.15 p.m. _____:
- 6.) 4.45 a.m. _____:
- 7.) midday _____:
- 8.) midnight _____:



Write the time for each clock face.
You may use words - **o'clock, half past**
or numbers 3.00, 4.30
How do we show morning or afternoon times?

What do **a.m.** and **p.m.** stand for?

SPELLING P.L.L

Personal Learning List

Clarify any words that you're not sure of.

Submarines
Short vowels
anywhere
bury
guest
fault
quarrel
wander
colour
brother
double
couple